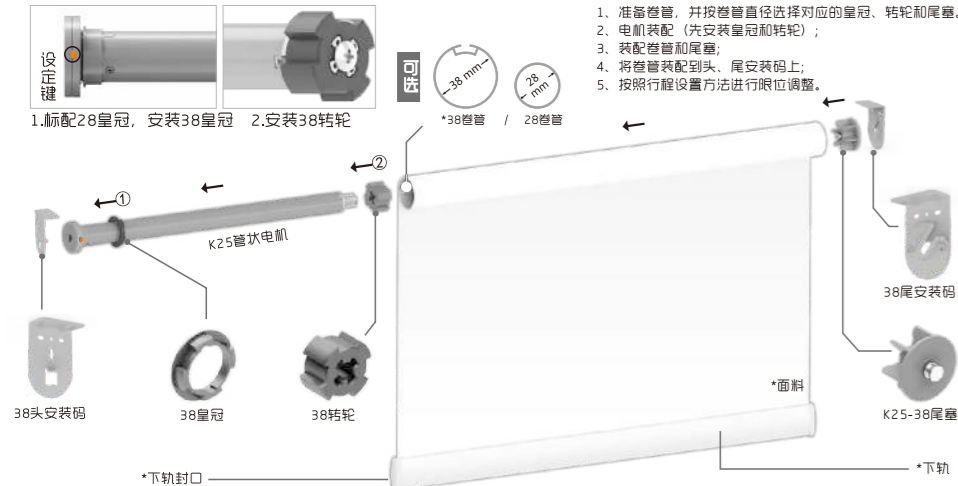


# K25-3E系列管状电机-涂鸦-说明书

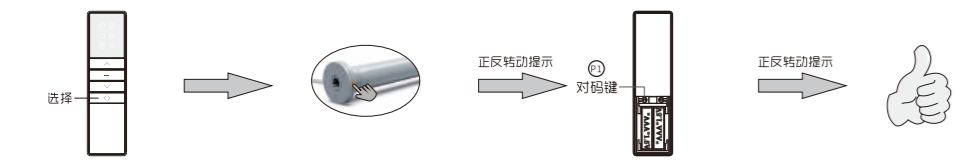
公司保留更改产品设计与说明书的权利, 届时将另行通知, 图片仅供参考, 具体以实物为准。 A/O H12136

## 电动卷帘机构图 注: 带“\*”号的是非本电机标配部件(可订制零件)

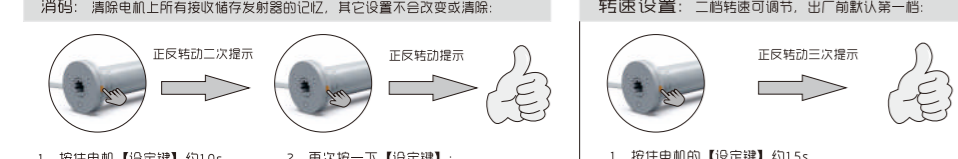


## 操作说明 (\*以A13按键发射器为例进行说明, 其它发射器请参考相应的发射器说明书。)

**对码:** 重复操作对码步骤即是消除当前码。一台电机最多存5个遥控码, 再增加遥控码只会覆盖第一个;



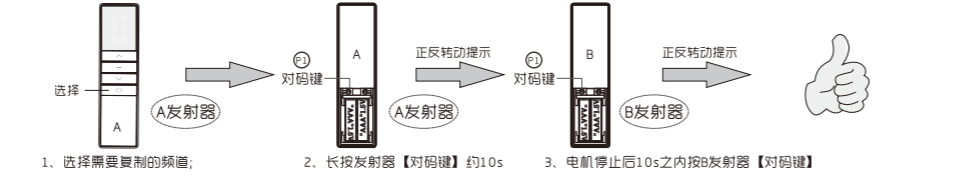
**消码:** 清除电机上所有接收储存发射器的记忆, 其它设置不会改变或清除;



**点动/连动模式互换:** 电机出厂默认为连动模式, 切换为点动模式后, 长按住【上行键】或【下行键】约2s电机一直连动运转;



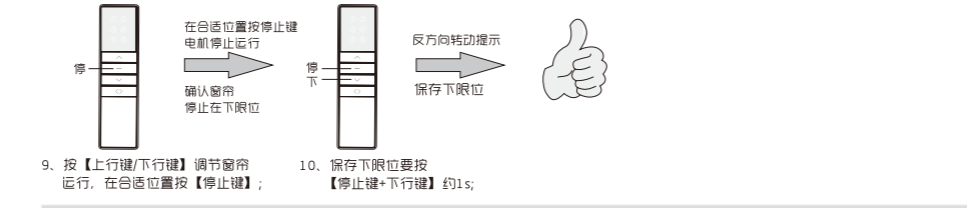
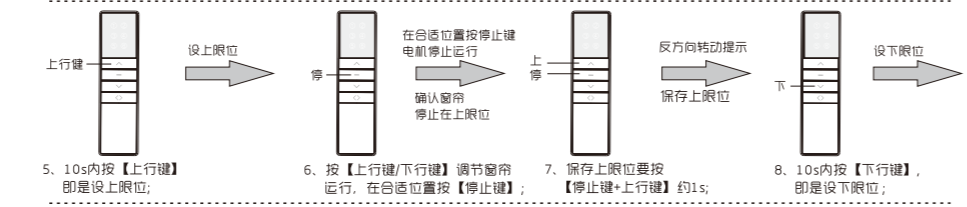
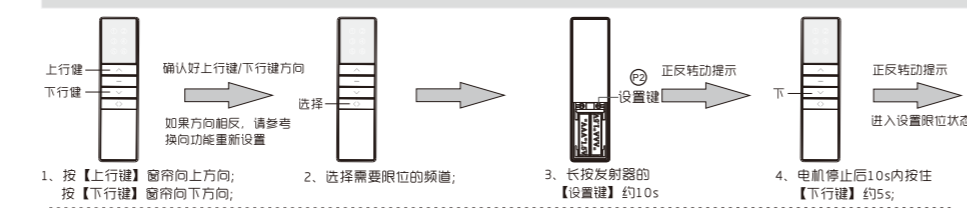
**复制:** 为已经对码的电机新增一个B发射器:



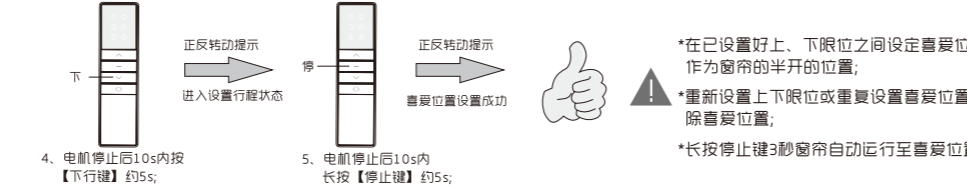
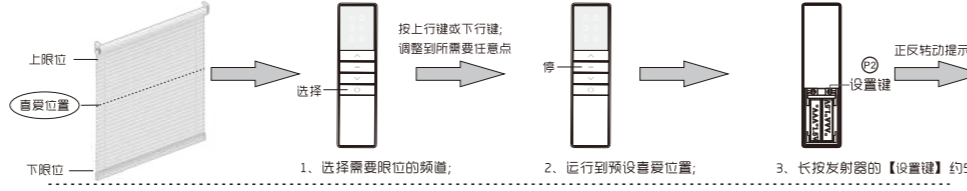
**换向:** 切换已对码电机运转方向。如: 换向前, 按发射器上行键, 窗帘往下运行; 换向后, 按发射器上行键, 窗帘往上运行;



**上限位/下限位设置:** 指按发射器【上行键或下行键】时, 窗帘向上/向下运行所能到达的理想最高/最低位置。

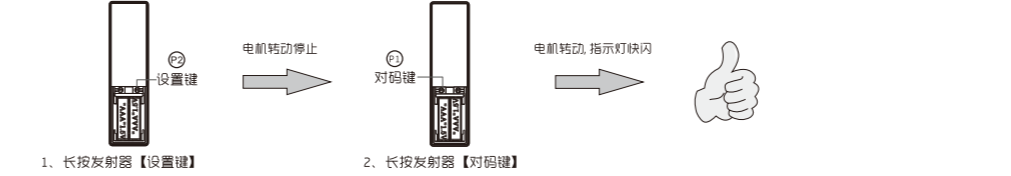


**喜爱位置设置:** 窗帘运行到喜爱位置, 重复操作可删除喜爱位置;



\*在已设置好上、下限位之间设定喜爱位置, 作为窗帘的半开的位置;  
\*重新设置上下限位或重复设置喜爱位置将会删除喜爱位置;  
\*长按停止键3秒窗帘自动运行至喜爱位置。

**wifi恢复出厂设置方法:**



**APP配网方法:**



01. 打开涂鸦APP, 选择右上角的“+”  
02. 选择自动发现, 提示“发现可用设备”时按下一步  
03. 输入WiFi密码, 按下一步

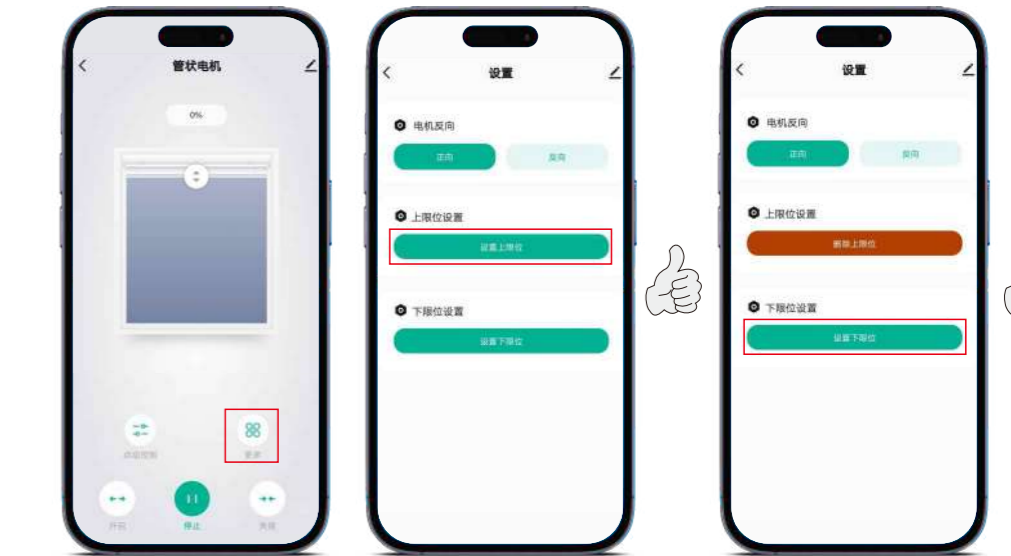


04. 等待设备连接  
05. 添加成功, 按完成  
06. 最终操作界面如上图所示

**上限位/下限位/喜爱位置设置:** 指按APP【开启】键或者【关闭】键时, 窗帘向上/向下运行, 所能到达的最高/最低位置。

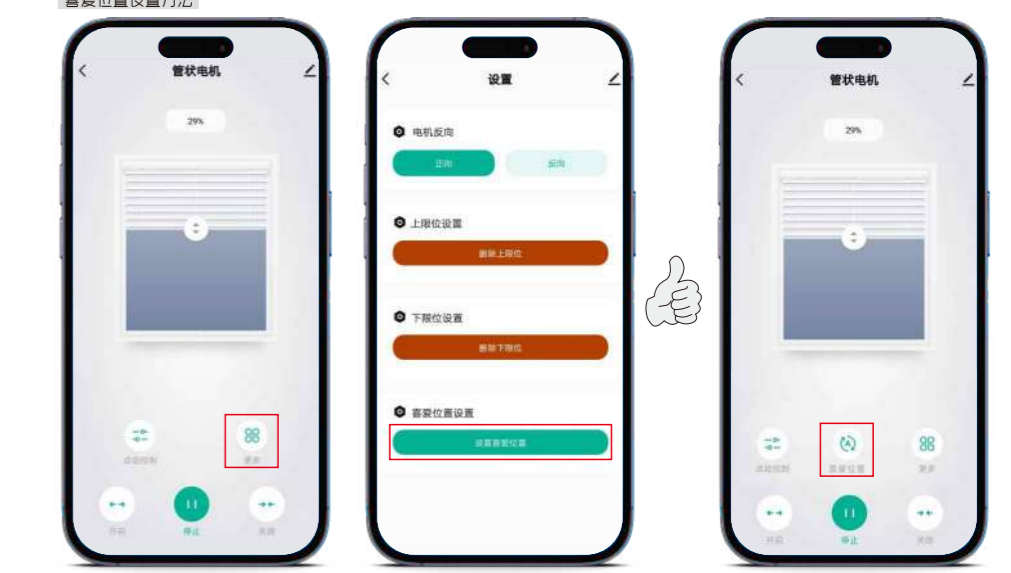
**温馨提示:**  
上下限位设置:  
· 确认好开启/关闭方向, 按【开启】键窗帘向上运行, 按【关闭】键窗帘向下运行; 如果方向相反, 请参考换向功能重新设置  
· 设置或删除上、下限位时, 喜爱位置将会被删除  
喜爱位置设置:  
· 当设置喜爱位置时, 窗帘行程无法设置在【上限位】或者【下限位】附近  
· 当窗帘运行到喜爱位置时, 方可删除喜爱位置。(其他位置无法删除)  
电机反向:  
· 安装时面向窗帘, 电机【设定键】在右边设置为【正向】; 在左边设置为【反向】

**上限位/下限位设置方法**



01. 按开启, 窗帘向上运行至指定位置时, 按停止, 然后按更多。  
02. 按设置上限位, 出现提示时按确定, 窗帘向下运行约1秒, 设置成功。  
03. 返回控制界面, 按关闭, 窗帘向下运行至指定位置时, 按停止, 然后按更多, 出现提示时按确定, 窗帘向上运行约1秒, 设置成功。

**喜爱位置设置方法**



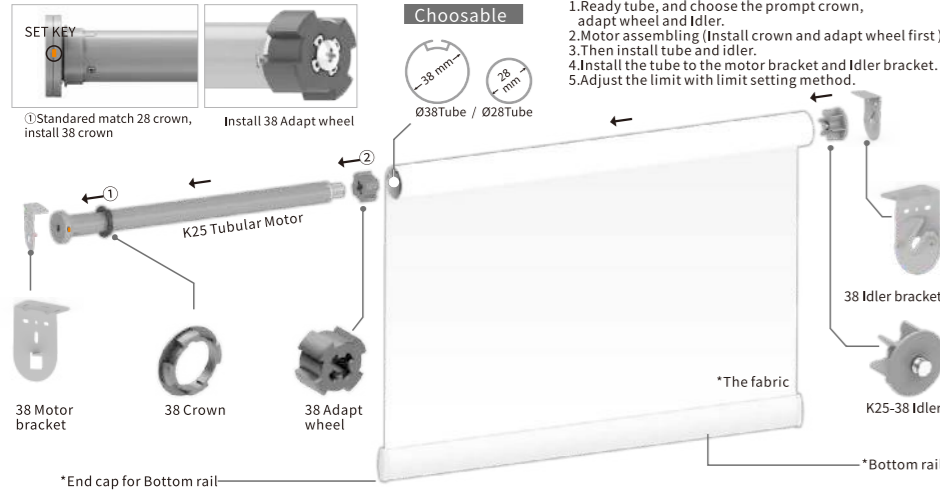
01. 按开启或关闭, 窗帘运行至喜爱位置时, 按停止, 然后按更多。  
02. 按设置喜爱位置, 窗帘会上/下运行各一秒, 设置成功。  
03. 设置完成后在控制界面可看到“喜爱位置”图标

# K25-3E Tubular Motor Tuya Operating Manual

Company reserves the right to change product design and specifications without prior notice then, photos are for reference only. H12136 A/0

## E Electric roller blind draft

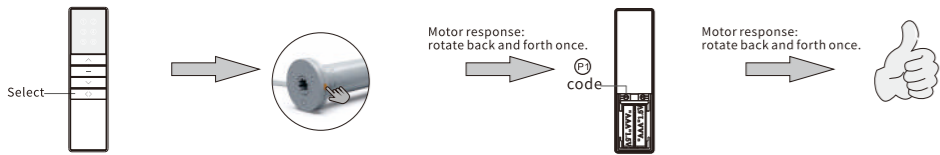
Note: the accessories which mark with "\*" are not standard assembly unit. (Available for custom made accessories.)



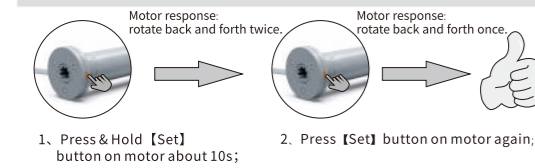
## T Transmitter operating instructions

(\*Take A13 button transmitter as an example, For other transmitters, please refer to the corresponding transmitter manual.)

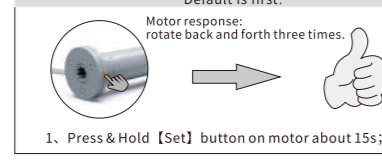
**Pairing transmitter and motor:** Repeat the code pairing step to eliminate the current code. One motor can store up to 5 channels, adding a new channel will only cover the first channel.



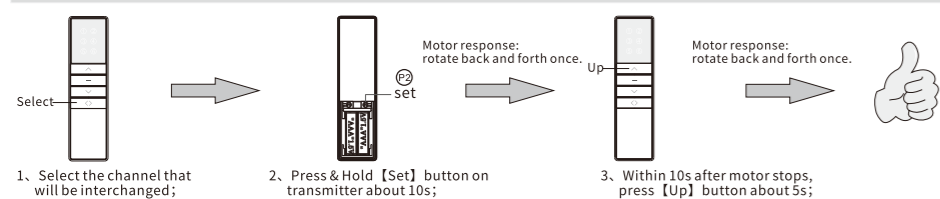
**Clear pairing :** Clear all pairing on the motor:



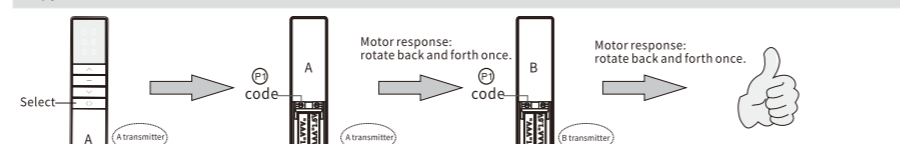
**Speed setting :** Two speed can be adjusted, Default is first:



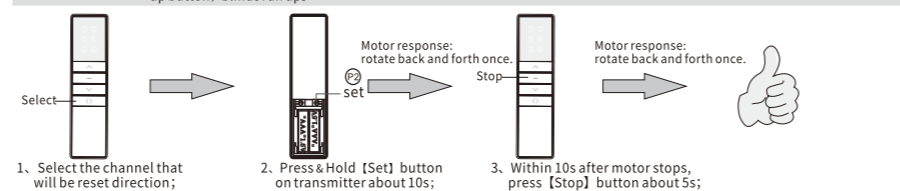
**Inching / Continuous moving interchange:** Default is continuous moving. After switching to inching moving, press & hold [Up] or [Down] button about 2s, motor will continuously moves:



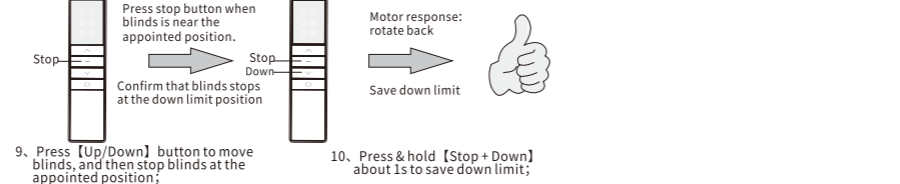
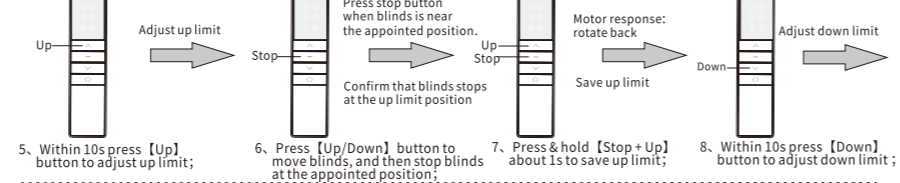
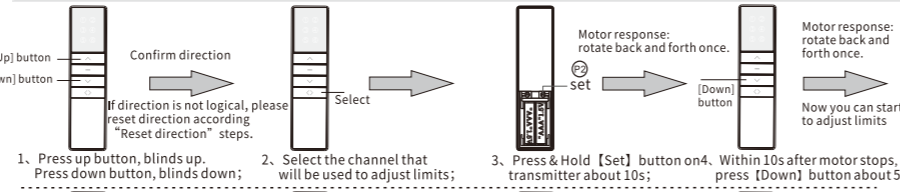
**Copy:** Add a new channel to control motor. (No need to touch motor):



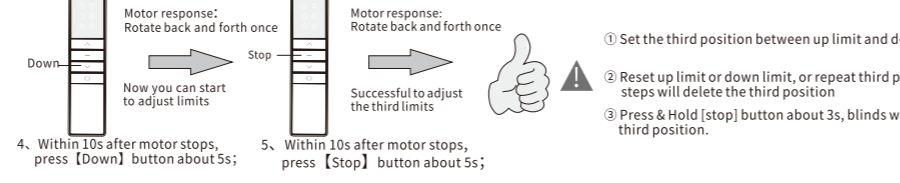
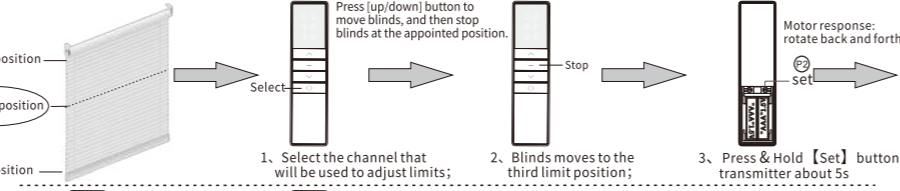
**Reset direction :** Reset motor direction. Such as: before reset, press transmitter up button, blinds run down. After reset, press transmitter up button, blinds run up.



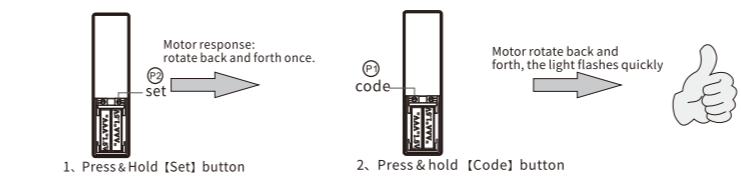
**Adjusting Limits:** When you press [Up] or [Down] button, the blinds will move up or down and stop automatically at the appointed position.



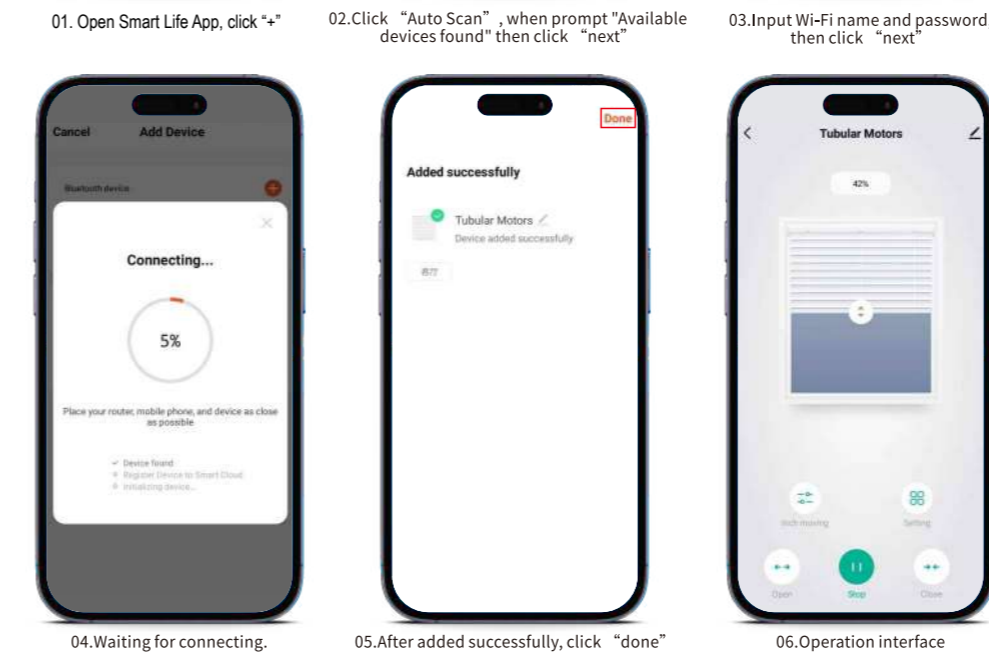
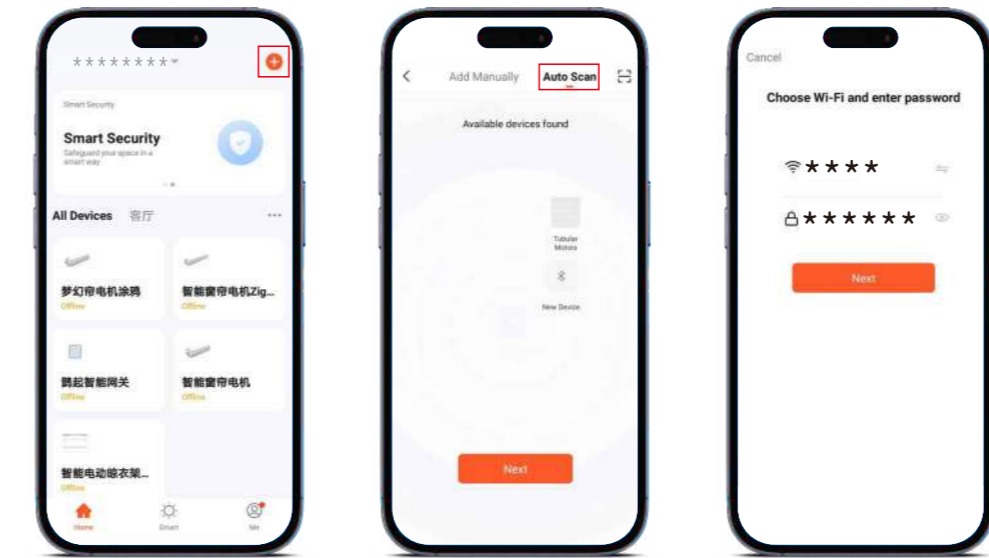
**Third position set:** move the blinds to third position, then repeat the operation once to delete the third position.



## Reset Wi-Fi:



**Configure network method:**

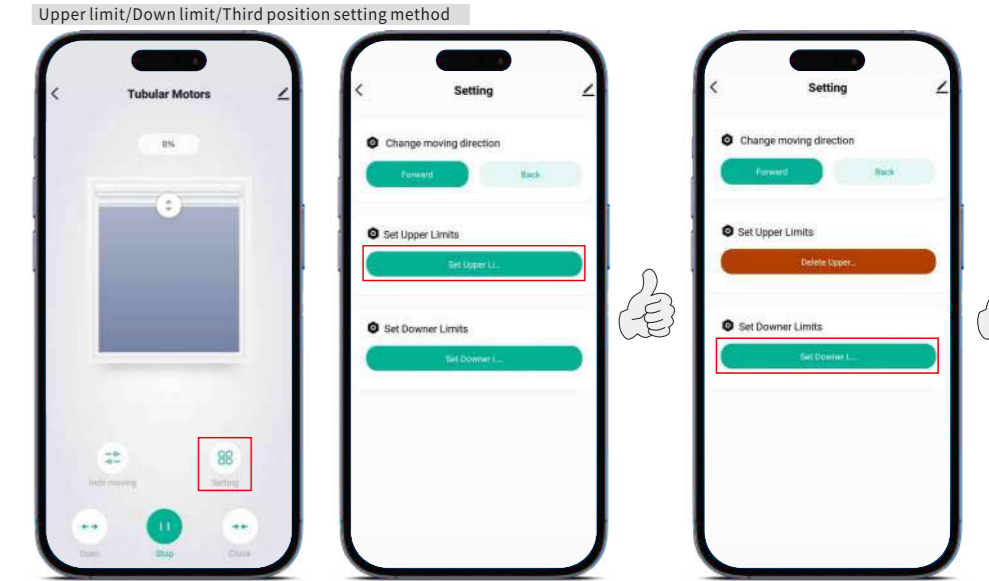


## Upper limit/down limit/ third position setting:

It refers to the highest/lowest position that can be reached when the blinds moves up/down.

**Kind tips**

- Upper and down limit settings: Confirm the opening/closing direction, press the [Open] to run the blinds upward, press the [Close] to run the curtain downward; if the direction is opposite, please refer to the reversing function to reset.
- When setting or deleting the upper or down limit, the third position will be deleted.
- Third position Settings: Third position cannot be set near the [upper limit] or [down limit].
- Third position Delete: Only when the blinds run to the third position, the third position can be deleted.
- Reverse direction: Facing the blinds when installing, it is [Forward] when the motor [Setting key] is on the right hand side; it is [Reverse] when on the left hand side.



## Third position setting method

